



**REGIONAL SPECIALISED METEOROLOGICAL CENTRE-TROPICAL CYCLONES, NEW DELHI  
TROPICAL WEATHER OUTLOOK**

**DEMS-RSMC TROPICAL CYCLONES NEW DELHI DATED 06.07.2024**

**TROPICAL WEATHER OUTLOOK FOR NORTH INDIAN OCEAN (THE BAY OF BENGAL AND THE ARABIAN SEA) VALID FOR NEXT 168 HOURS ISSUED AT 0600 UTC OF 06.07.2024 BASED ON 0300 UTC OF 06.07.2024.**

**BAY OF BENGAL:**

YESTERDAY'S CYCLONIC CIRCULATION OVER EASTCENTRAL BAY OF BENGAL LAY OVER WESTCENTRAL BAY OF BENGAL OFF SOUTH ANDHRA PRADESH COAST BETWEEN 5.8 & 7.6 KM ABOVE MEAN SEA LEVEL AT 0300 UTC OF TODAY, THE 06TH JULY, 2024.

SCATTERED TO BROKEN LOW AND MEDIUM CLOUDS WITH EMBEDDED INTENSE TO VERY INTENSE CONVECTION LAY OVER BAY OF BENGAL AND MODERATE TO INTENSE CONVECTION LAY OVER NORTH ANDAMAN SEA.

**\*PROBABILITY OF CYCLOGENESIS (FORMATION OF DEPRESSION) DURING NEXT 168 HRS:**

24 HOURS	24-48 HOURS	48-72 HOURS	72-96 HOURS	96-120 HOURS	120-144 HOURS	144-168 HOURS
NIL	NIL	NIL	NIL	NIL	NIL	NIL

**\*NOTE: EVERY 24HR FORECAST IS VALID UPTO 0300 UTC (0830 IST) OF NEXT DAY**

**ARABIAN SEA:**

SCATTERED TO BROKEN LOW AND MEDIUM CLOUDS WITH EMBEDDED MODERATE TO INTENSE CONVECTION LAY OVER EAST ARABIAN SEA, GULF OF CAMBAY, LAKSHADWEEP ISLANDS AREA & COMORIN AREA. SCATTERED LOW AND MEDIUM CLOUDS WITH EMBEDDED WEAK TO MODERATE CONVECTION LAY OVER REST OF ARABIAN SEA.

**\*PROBABILITY OF CYCLOGENESIS (FORMATION OF DEPRESSION) DURING NEXT 168 HRS:**

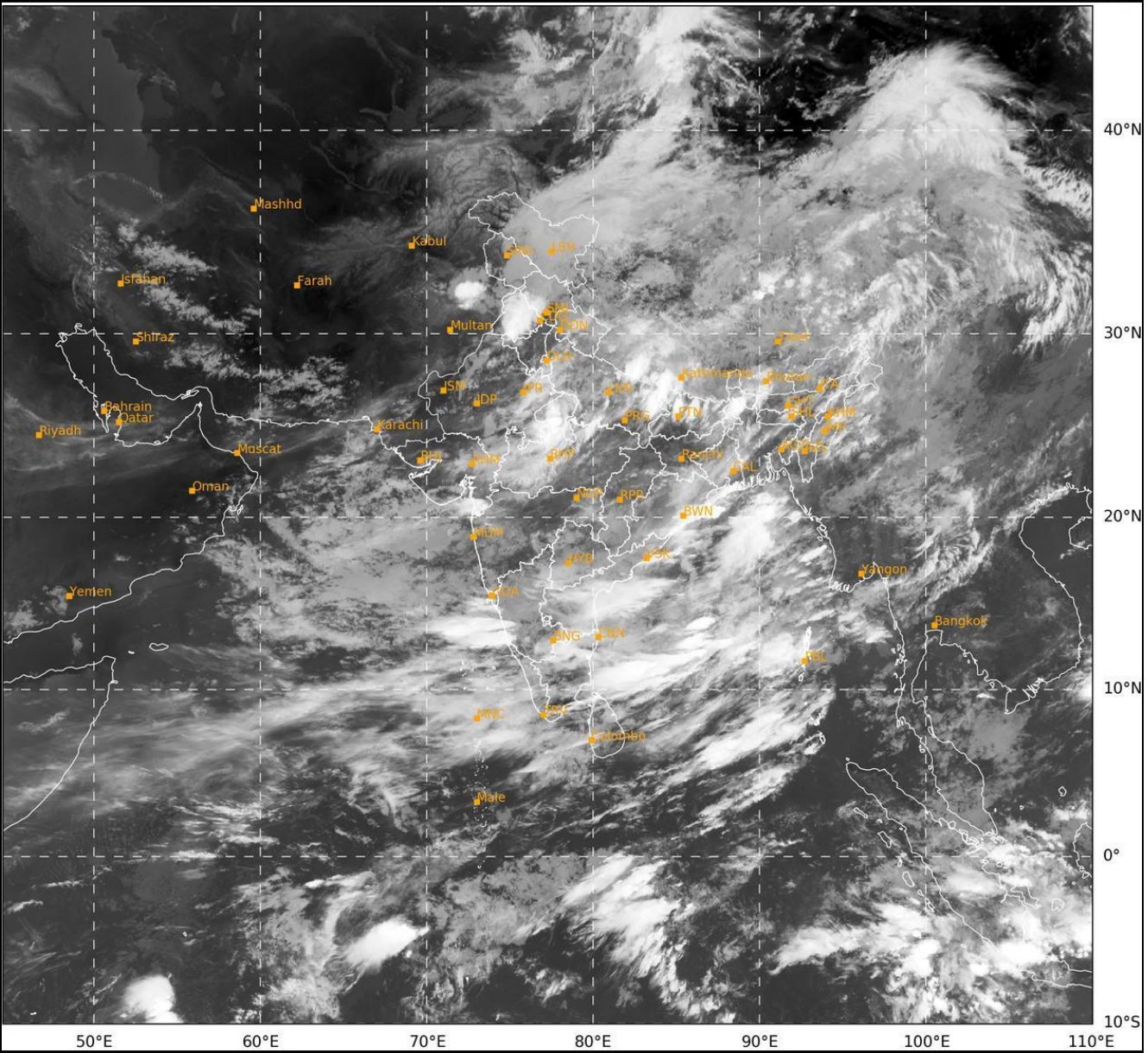
24 HOURS	24-48 HOURS	48-72 HOURS	72-96 HOURS	96-120 HOURS	120-144 HOURS	144-168 HOURS
NIL	NIL	NIL	NIL	NIL	NIL	NIL

**\*NOTE: EVERY 24HR FORECAST IS VALID UPTO 0300 UTC (0830 IST) OF NEXT DAY**

**REMARKS:** NIL

SAT : INSAT-3DR IMG  
IMG\_TIR1 10.8 um  
LIC Mercator

06-07-2024/(0315 to 0342) GMT  
06-07-2024/(0845 to 0912) IST



Cloud distribution: (a) Isolated: <25%, Scattered:25-50%, Broken: 51-75%, Solid:>75%, Convection Intensity: (a) Weak: Cloud Top Temperature (CTT) >-25°C, (b) Moderate: CTT: - 25°C to -40°C, (c) Intense: CTT: - 41°C to -70°C and (d) Very Intense: : Less than -70°C  
PROBABILITY OF CYCLOGENESIS (FORMATION OF DEPRESSION):NIL: 0%, LOW: 1-33%, , MODERATE: 34-66% AND HIGH: 67-100%  
This is a guidance Bulletin for WMO/ESCAP Panel Member countries. Visit respective National websites for Country specific Bulletins